

Electrophoresis



IDMax™ pre cast protein gels

The IDMax™ Deep Well Precast Polyacrylamide Gels come with the innovative patent-pending easy-open-cassette (use just your fingertips). IDMax™ gels are available in either a 10 well (50 µl sample volume per well) or 15 well (35 µl sample volume per well) format with the combs left in place. After removing the comb the gels are ready to use.

- | |
|---|
| • Easy to open cassette (patent pending) |
| • Sample loading buffer included |
| • Gel Matrix is coloured blue for easy loading of samples |
| • Shelf life is 12 months |
| • Cassette is compatible with most gel chambers |
| • Gradient gels with and without SDS available |
| • Embedded identification code for reliable tracking |



Fig. 1: Ready to use IDMax® protein gels

Running buffer and sample loading buffer available as ready to go solutions and/or pouches



New Fast & Sharp Running Buffer for protein electrophoresis developed by DGel Electrosystem, leads to fast SDS electrophoresis.

Fig. 2: Electrophoresis Buffer



Fig. 3: Unique ID number

Cast your own mini gels: IDCast™ Easy-to-cast.

Here again the easy to use cassette design in either 10 x 8.2 cm or 10 x 10 cm formats to fit most gel boxes is included. Each of the empty cassettes comes with a unique identification number. This identification number readily transfers into your gel matrix. Also available are two combs sizes, either a 10 well (50 µl loading capacity) or 15 well (30 µl loading capacity). Easy-to-cast kits come with 40 empty cassettes.

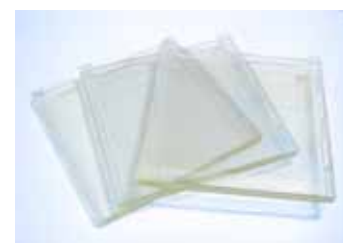


Fig. 4: IDCast Gel cassette

Genetics NIPPON Genetics
EUROPE GmbH

Nippon Genetics Europe GmbH, Binsfelder Strasse 77, 52351 Dueren, Germany

www.nippongenetics.eu / www.nippongenetics.de

Em@il: info@nippongenetics.eu

Design by Roman Luenzer

Protein Flyer 5K/03/10

Electrophoresis



Fig.5:FastGene™ Protein Electrophoresis Chamber

This remarkable electrophoresis chamber is light, easy to use and safe. The key features of this crystal clear electrophoresis chamber are:

- Made from crystal clear plastic to give an unobstructed 360° view of your gel during crucial well loading and monitoring of your electrophoresis
- Holds two 10 x 8.2 cm gel cassettes simultaneously
- Buffer surrounds the gel cassettes to give optimal heat dissipation resulting in straighter migration
- Customized for 10 x 8.2 cm mini-gels, the wedge-based cassette holding system allows for simple and quick insertion and release of the gel cassettes
- The see-through lid/electrode assembly easily slides onto the electrophoresis chamber to provide a safe electrophoresis environment

Prestained Protein Marker

Nippon Genetics Europe offers 2 different protein markers, one with pink/blue bands and the other with a combination of blue and red bands. We are recommending the PINK protein marker for all kinds of protein gels, whereas the blue/red combination is preferably used for standard Tris/Glycine gels.

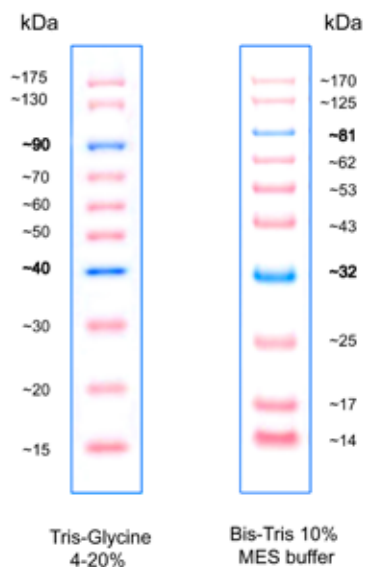


Fig.6: Pink Protein Marker
Cat. No.: MWP02 Size: 2 x 500µl

- Broad range: 15 - 175 kDa.
- Ready to use: Supplied in a loading buffer for direct loading on gels.
- Easy to identify: Includes the 40 and 90 kDa reference bands coupled with a blue dye.
- Sharp bands

- Broad range: 15 - 175 kDa.
- Ready to use: Supplied in a loading buffer for direct loading on gels.
- Easy to identify: Includes the 20 and 75 kDa reference bands coupled with an orange dye.
- Sharp bands

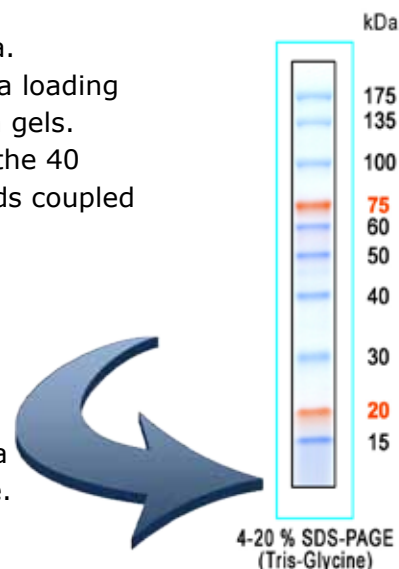


Fig.7: Blue/Orange Protein Marker
Cat. No.: MWP01 Size: 500µl

Genetics NIPPON Genetics
EUROPE GmbH

Nippon Genetics Europe GmbH, Binsfelder Strasse 77, 52351 Dueren, Germany
www.nippongenetics.eu / www.nippongenetics.de
Em@il: Info@nippongenetics.eu
Design by Roman Luenzer
Protein Flyer 5K/03/10